

New **carrier** range

High Quality...
Low Cost...

*Conveyors & Elevators
for Cereals Handling
& Storage*

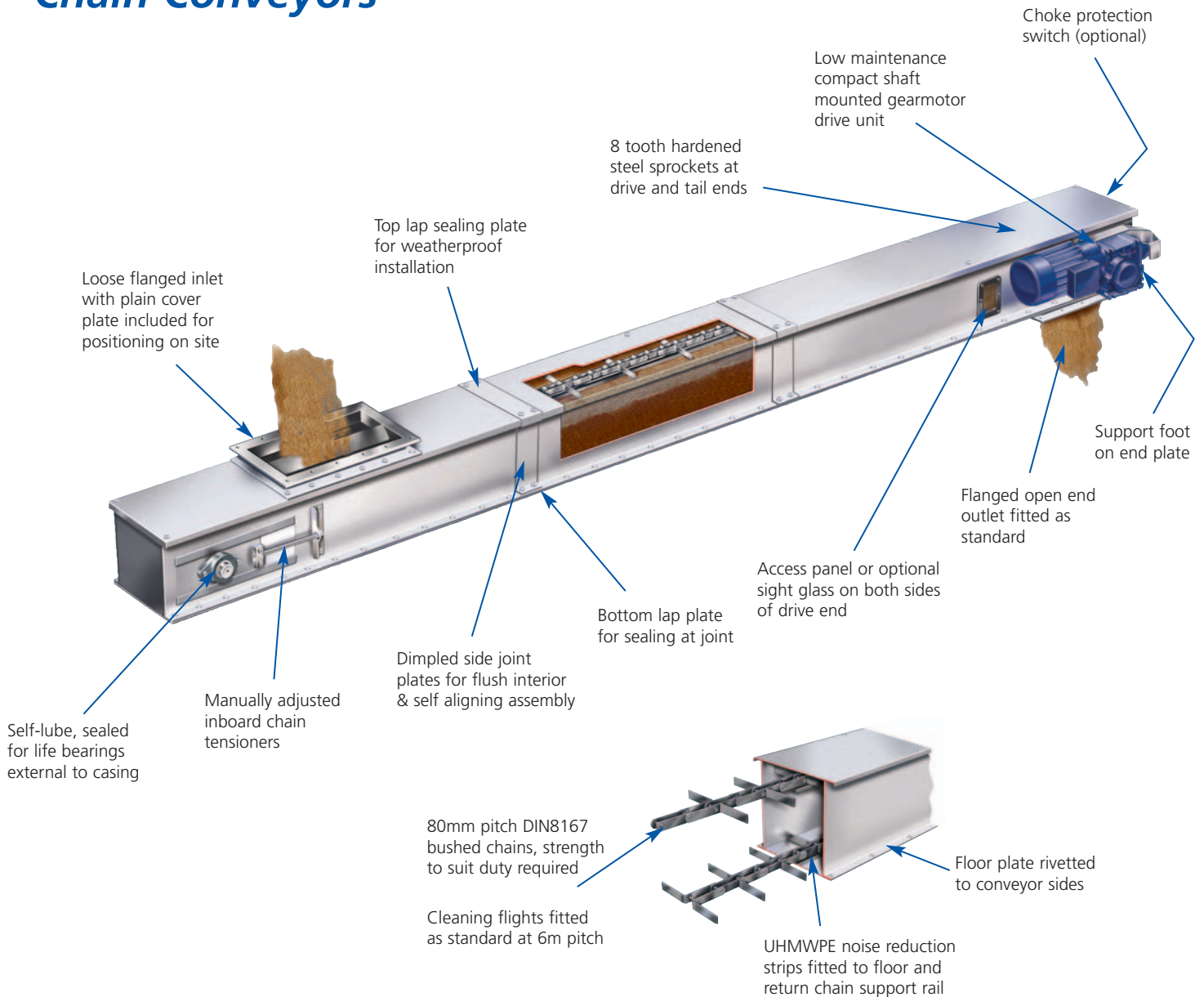


General Features of the *New* **carrier** *range*

- Elevators and conveyors supplied in two casing sizes covering throughputs of 40, 60, 80 and 100tph cereals @ 750kg/m³
- Conveyor lengths up to 60m long, elevators up to 30m high
- All galvanised steel casing construction as standard for indoor or outdoor applications
- Low maintenance shaft mounted gearmotor drives with IP55 motors up to 7.5kW

from **Guttridge**

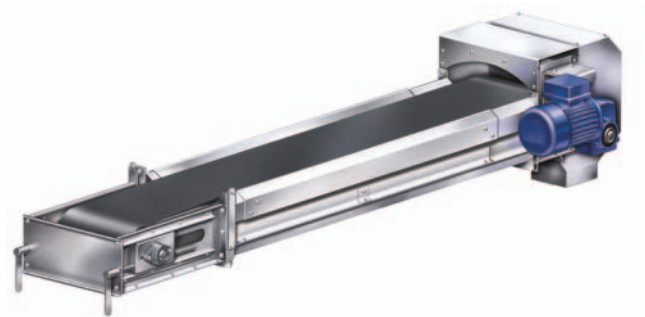
Chain Conveyors



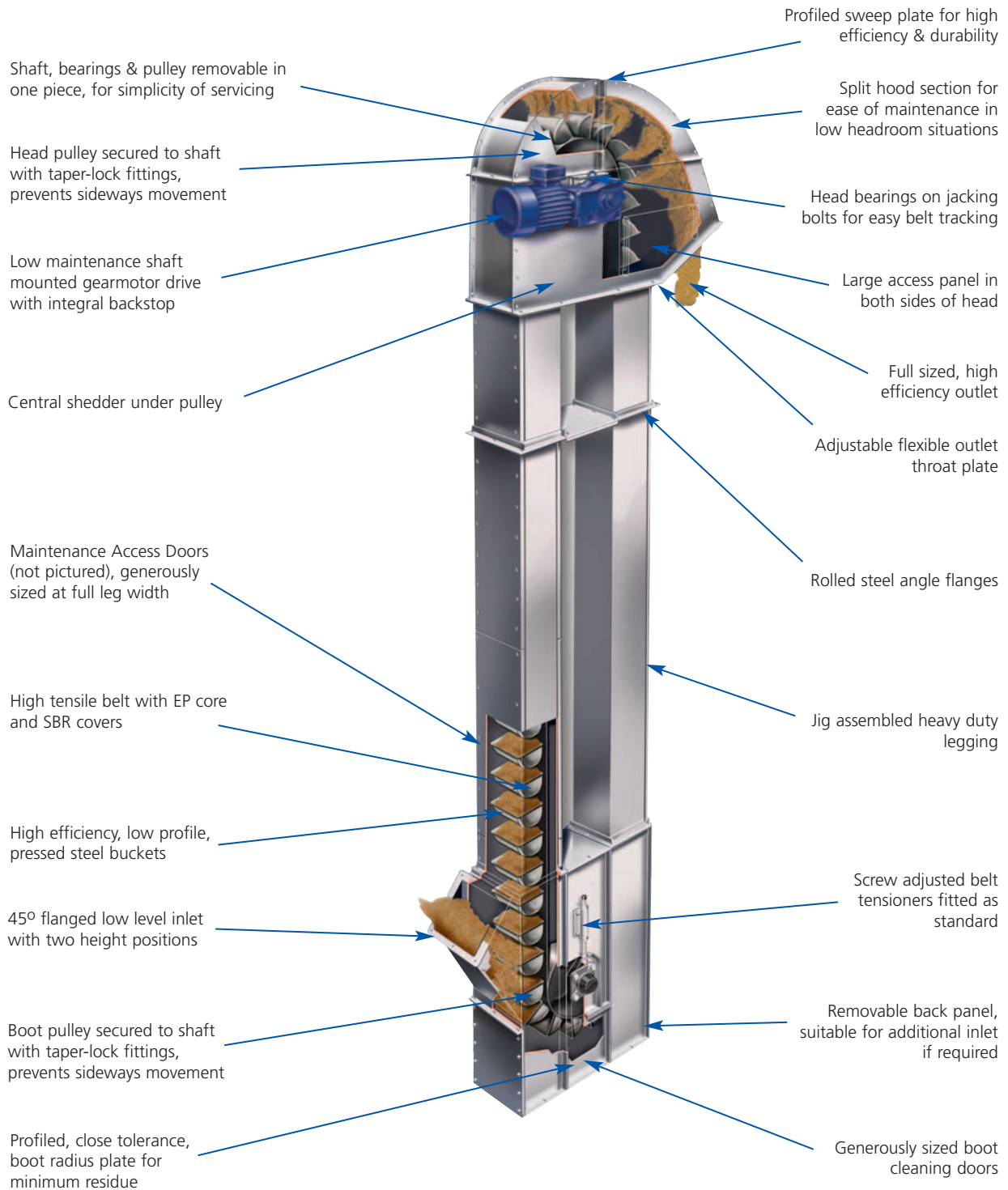
Soft Flight Angleveyor



Slip form Belt Conveyor



Bucket Elevators



New **carier** range

Chain Conveyors (chain width / tph):	● 200/40	● 200/60	● 250/80	● 250/100
Bucket Elevators (bucket width / tph):	● 140/40	● 140/60	● 180/80	● 180/100
Angleveyors (chain width / max tph):	● 200/60	● 250/100	● up/down bends 10-45°	
Slip Form Belt Conveyors (belt width / tph):	● 300/40	● 380/60	● 500/100	
Trench, Mechanical Intakes for Chain Conveyors:	● 3000mm std length	● special lengths to order		

Notes.

1. Product capacity in tonnes/hr (tph) is based on dry cereals at 750 kg/m³
2. Capacity is dependant on product flowability and conveyor incline

New **carrier** Conveyor Options

- Automatic spring loaded chain tensioners
- Flow and return arrangement
- Open bottom sections for store filling applications
- Trench intake or mechanical intake systems
- Full range of outlet slides including hand slides, rack & pinion (remote), electro-pneumatic or motorised. In-line and cross slide options available
- Outlet adaptors and full range of standard ducting & fittings
- Recycle cups fitted to chain for recirculation of carryover
- Diaphragm switch in end plate for choke protection
- Under-speed rotation sensor on tail end shaft
- Sight glasses fitted in sides of casing
- Upward or return bend sections (subject to reduction in throughput)
- Span Brace assembly for unsupported spans up to 12m
- ATEX certification

New **carrier** Elevator Options

- Maintenance access platforms, intermediate rest platforms and ladders with safety hoops
- Outlet adaptors and full range of standard ducting & fittings
- Cage type bottom pulley
- Seed Boot (stand and pullout tray for easier cleaning)
- Pressure relief panels - flap & switch or membrane type to meet ATEX standards
- Belt scraper on rising leg
- Bucket spacing washers (typically for seed applications)
- Nitrile belt for materials with high oil/fat content
- Alternative belt and bucket systems for special applications
- Under-speed rotation sensors for belt slip detection
- Belt misalignment sensors
- Bearing temperature sensors
- Monitoring systems for safety sensors
- ATEX certification

Guttridge, established in 1962, are the UK's leading manufacturer of bulk materials handling machinery with equipment supplied to many countries throughout the world.

In our large modern factory skilled engineers use the latest 3D design software and ERP business management systems together with state-of-the-art manufacturing machinery and assembly facilities. Close in-house control of the entire specification, design and manufacturing operation provides us with an unrivalled capability to meet our customers' demanding design and quality needs.

Guttridge machines are regularly evaluated for potential design improvements in an effort to find ways of increasing manufacturing efficiency and product quality whilst reducing lead times. Our aim is to provide up to date machines at the most competitive prices, without compromise to quality and service.

Specification and dimensions may be altered without prior warning.



Presented by:

Guttridge Limited

Wardentree Park
Spalding
Lincolnshire
PE11 3UU
United Kingdom

Tel: + 44 (0) 1775 765 300
Fax: + 44 (0) 1775 765 304
sales@guttridge.co.uk
www.guttridge.co.uk