

## *Slide Valves, Spouting & Fittings*



**S**lide valves, spouting and fittings are the connection components that transform a set of individual machines into a complete operational production system. We manufacture a robust range of heavy duty components designed to be compatible with our ranges of Bucket Elevators, Screw Conveyors & Dischargers and Chain & Flight Conveyors. We offer clients the convenience and peace of mind of a one-stop shop for their materials handling needs. Guttridge slide valves, spouting & fittings are in use in many different industry sectors handling a huge variety of bulk materials.

### **Slide Valves**

A range of superior quality slide valves designed and built to the best industrial standards.

**Construction** - fabricated from mild steel with a painted finish, galvanised or stainless steel.

**Covers** - protective covers are fitted top and bottom.

**Slide Rollers** - the slide plate runs on large diameter nylon rollers mounted on zinc plated hubs, requiring no lubrication and giving a long trouble-free life.

**Seals** - a flexible nylon top seal and brush bottom seal clean the slide plate at every stroke.

**Electrical** - where specified an externally mounted electrical connection box allows all wiring to be quickly and easily connected.

**Operation** - all slide valves are fully tested before despatch.

### **Types available -**

**Electro-pneumatic** - complete with limit microswitches for status indication and solenoid valve for actuation. Automatic closure on power failure.

**Motorised** - leadscrew operated via a belt drive, complete with limit microswitches for status indication.

**Rack & Pinion** - with handwheel or chainwheel & chain for hand operation with optional limit microswitches for status indication.

**Manual** - push-pull operation with optional limit microswitches for status indication.

**Special Purpose Slide Valves** - available designed and built to customers' own specific requirements.

### **Spouting & Fittings**

A range of superior quality, heavy duty spouting and fittings designed and built to the best industrial standards.

**Construction** - fabricated from mild steel with a painted finish, galvanised or stainless steel.

**Sizes available** - 180mm, 230mm, 300mm nominal external size in round or square configuration.

#### **Units available -**

30° & 45° fixed bends	30° & 45° diverter valves
straight ducting	60° & 90° diverter valves
2-way branches	square to round transitions
loose flanges	special transitions
joint clamps	loose transitions
check spouts	

**Specification** - fittings are fabricated in 3mm thick material, ducting is fabricated in 2mm thick material. Diverter valve flaps are mounted on nylon bearings for long, maintenance-free life.

### **Diverter types available -**

**Electro-pneumatic** - complete with rotary actuator, limit microswitches for status indication and solenoid valve for actuation.

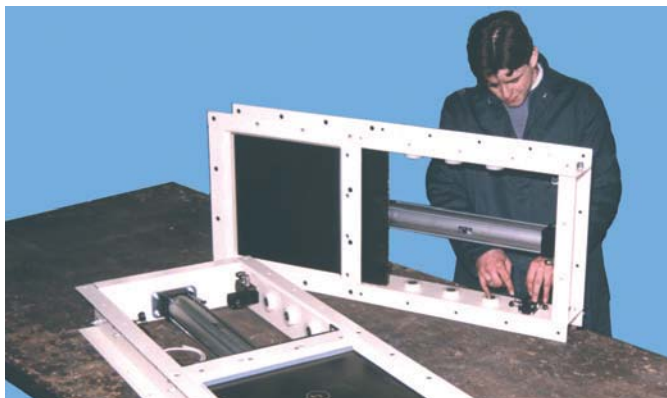
**Motorised** - linear actuator/geared motor with limit of travel microswitches.

**Remote** - with rope or chainwheel & chain for hand operation.

Manual - lever operated.

**Special Purpose Spouting & Fittings** - available designed and built to customers' own specific requirements.

# Slide Valves, Spouting & Fittings



**Above-Left.**

Chain conveyors with chain-operated inline slide valves and custom made spouting.

**Above**

A stainless steel diverter valve for a powder handling application.

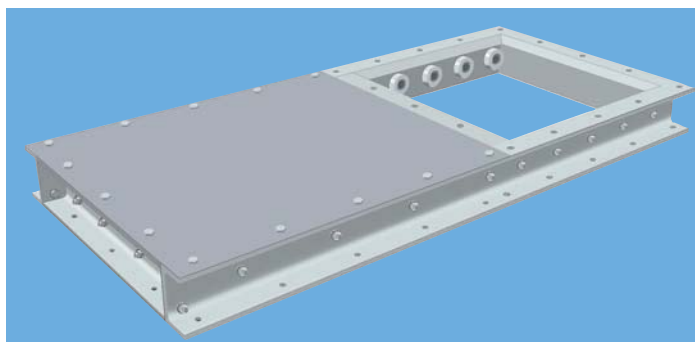
**Left**

Electro-pneumatic slide valves under assembly.



## Heavy Duty Bin Slide Valves

A range of slide valves designed for bin outlet applications. We also offer slide valves designed to suit our standard ranges of screw and chain conveyors.



Aperture	Flange	Depth	Length
250sq	65	125	860
300sq	65	125	910
350sq	65	125	1010
400sq	65	125	1110
450sq	75	150	1250
500sq	75	150	1350
600sq	75	150	1550
750sq	75	150	1850

**Notes**

1. Non-standard sizes are available to suit customer requirements.
2. Dimensions are nominal and subject to change without notice.

## Guttridge SERVICES LTD

Wardentree Park, Pinchbeck,  
Spalding, Lincolnshire,  
PE11 3UU, ENGLAND  
Tel: 44 (0) 1775 765300  
Fax: 44 (0) 1775 765301  
Email: sales@guttridge.co.uk

